



WAYNE STATE  
UNIVERSITY

# MAKE YOUR MOVE

GUIDE FOR TRANSFER STUDENTS

---

A Premier Urban Research University  
in the Heart of Detroit

WAYNE STATE UNIVERSITY

# Transfer success



Transferring to Wayne State is a great decision. In fact, Wayne State welcomes **over 2,000 transfer students** from two- and four-year colleges each year. Let us help you join them and share the ways we can support your success. Our goal is to make your experience as smooth and rewarding as possible.

[wayne.edu/transfer](https://wayne.edu/transfer)



“Transferring to Wayne State has been a pivotal milestone in my academic and professional journey. It paved the way for numerous opportunities; from participating in scientific research to presenting posters in domestic and international conferences. It provided crucial resources that significantly contributed to my acceptance into medical school. I am eternally grateful for Wayne State and beyond proud to be a Warrior.”

**Mohammad Turanni**  
Neuroscience major  
Transfer student from Henry Ford College



# AT A GLANCE

# #1

DESTINATION FOR  
MICHIGAN COMMUNITY  
COLLEGE STUDENTS

# 24,000

undergraduate,  
graduate and  
professional students

# 200

acre campus in  
Midtown Detroit

# NO LIMIT

on transfer credit

# 46%

receive merit  
scholarships

# 375+

academic  
programs

# 8X

Phi Theta Kappa  
Transfer Honor Roll

# LARGEST

population of student  
veterans in the state

Top  

# 100

public university



# 86

countries represented by  
new Wayne State students

# 51%

first generation  
transfer students

As a transfer to Wayne State you can:

- » **GRADUATE ON TIME**  
with a world-class education.
- » **FIND MEANINGFUL CONNECTIONS**  
and resources to support your success.
- » **EXPECT TO SAVE MONEY**  
if transferring from a community college.
- » **PREPARE FOR UPPER-LEVEL COURSES**  
and career advancement.
- » **JUMPSTART GRADUATE SCHOOL.**

# CHOOSE YOUR PATH TO SUCCESS

Explore our 375 programs to match your passion and career goals.

[wayne.edu/programs](http://wayne.edu/programs)

## BUSINESS

[ilitchbusiness.wayne.edu](http://ilitchbusiness.wayne.edu)

Accounting  
Entrepreneurship and Innovation (minor only)  
Finance  
Global Supply Chain Management  
Management  
Marketing  
Technology, Information Systems and Analytics

## EDUCATION

[education.wayne.edu](http://education.wayne.edu)

Community Health  
Early and Elementary Education (B-K, PK-3, 3-6)  
Exercise and Sport Science  
Health and Physical Education Teaching (K-12)  
Secondary Education (7-12)  
Special Education (K-12)  
Sport Management  
Visual Arts Education (K-12)

## ENGINEERING

[engineering.wayne.edu](http://engineering.wayne.edu)

Computer Science  
Engineering

- Biomedical
- Chemical
- Civil
- Electrical and Computer
- General
- Industrial
- Information Technology
- Mechanical Technology
- Computer
- Construction Management
- Electrical/Electronic Engineering
- Electromechanical Engineering
- Mechanical Engineering
- Welding and Metallurgical Engineering

## FINE, PERFORMING AND COMMUNICATION ARTS

[cfpca.wayne.edu](http://cfpca.wayne.edu)

Art  
Art History  
Communication Studies

Dance  
Design (Graphic, Fashion, Industrial and Interior)  
Design and Merchandising (Fashion)  
Film  
Journalism  
Media Arts and Studies  
Music  
Public Relations  
Theatre

## HONORS

[honors.wayne.edu](http://honors.wayne.edu)

The Irvin D. Reid Honors College is for motivated students who thrive on academic challenges. Honors students can pursue any major.

## LIBERAL ARTS AND SCIENCES

[clas.wayne.edu](http://clas.wayne.edu)

Actuarial Mathematics  
African American Studies  
Anthropology  
Astronomy  
Biochemistry and Chemical Biology  
Biological Sciences  
Biomedical Physics  
Chemistry  
Communication Sciences and Disorders  
Criminal Justice  
Economics  
Employment and Labor Relations  
English  
Environmental Science  
Forensics and Investigation (minor only)  
Gender, Sexuality and Women's Studies  
Geology  
Global Health and Social Medicine (minor only)  
Global Studies  
Health Care Ethics (minor only)  
History  
Latino/a and Latin American Studies (co-major)  
Law  
Linguistics  
Mathematical Economics

Mathematics  
Neuroscience  
Nutrition and Food Science  
Philosophy  
Physics  
Political Science  
Psychology  
Public Affairs  
Public Health  
Public History (minor only)  
Sociology  
Statistics  
Urban Studies and Planning  
Urban Sustainability (minor only)  
World Languages, Literatures and Cultures

- Asian Studies
- Chinese
- Classics, Greek and Latin
- French and Francophone Studies
- German
- Italian
- Japanese
- Near Eastern Languages and Cultures
- Spanish

## NURSING

[nursing.wayne.edu](http://nursing.wayne.edu)

Traditional Nursing  
Direct Admit Nursing

## PHARMACY AND HEALTH SCIENCES

[cphs.wayne.edu](http://cphs.wayne.edu)

Applied Health Sciences  
Medical Laboratory Science  
Mortuary Science  
Radiation Therapy Technology  
Radiologic Technology

## SOCIAL WORK

[socialwork.wayne.edu](http://socialwork.wayne.edu)

Law and Social Work (minor only)  
Social Work  
Social Work and Social Justice (minor only)

## PRE-PROFESSIONAL CURRICULA

[wayne.edu/advising/center](http://wayne.edu/advising/center)

If your career goal requires graduate study, Wayne State can help you get there. These pre-professional programs are not majors (you still need one of those!), but are designed to put you in prime position for an advanced degree.

## GRADUATE STUDIES | [gradschool.wayne.edu](http://gradschool.wayne.edu)

Wayne State is acclaimed for its Graduate School, where students can earn certificates as well as master's, doctoral and professional degrees in hundreds of fields. Students with focused goals can begin graduate studies as an undergraduate by applying to programs that offer early admission to grad school, and save time and money — while increasing earning potential in their careers:

*Accelerated Graduate Enrollment (AGRADE)*

*LawStart*

*Wayne Med-Direct*

# Become A Warrior

[wayne.edu/apply](https://wayne.edu/apply)

**Transferring to Wayne State is easy.** We encourage you to apply early to avoid missing any deadlines or special invitations. Submit all official transcript(s) and other materials by the appropriate date, depending on when you plan to begin classes. Most students with over 24 transferable credits and a cumulative 2.5 GPA or above are admissible. If you have fewer than 24 semester hours of transferable credit, be sure to send your official high school transcript.

*If you have earned an associate degree, you may be admitted with a cumulative GPA of 2.0 or above.*

## **ONE** Start online

Visit [wayne.edu/apply](https://wayne.edu/apply) to complete the university application. The application fee is \$25.

## **TWO** Submit your transcript(s)

Request official transcript(s) from each college attended.

## **THREE** Connect with the Transfer Student Success Center (TSSC)

Schedule an appointment, attend an event, or review resources at [wayne.edu/transfer](https://wayne.edu/transfer).

## Important application deadlines

Fall – Aug. 15

Winter – Dec. 1

Spring/Summer – April 1

## Scholarship deadlines

Fall – June 1

Winter – Oct. 1

After you've submitted your application, start checking your application status portal at [slate.wayne.edu/status](https://slate.wayne.edu/status) to see your admission decision. Good news starts with

# WELCOME WARRIORS!

We  Transfer Students!

WSU is dedicated to helping you transition successfully. WSU has been named to Phi Theta Kappa's Transfer Honor Roll for multiple years for our commitment to transfer students.

**APPLY  
TODAY!**



WAYNE STATE

# Transfer Pathways



**What are the pathways?** A simple and seamless path to your success. The pathways are designed so you can complete your associate degree and earn your bachelor's degree without losing time or credits. You can select from many areas of study with either a transfer or career focus.

**How does it work?** Complete your associate degree, including the Michigan Transfer Agreement (MTA) within one of the pathways and you are guaranteed admission and junior status at Wayne State. We'll provide a clear roadmap to earning your bachelor's degree in four years with opportunities to customize around your interests and goals.

## Benefits of pathways



Transfer admission guarantee



Save time and money and transfer with junior status



Personalize your pathway around your educational and career interests



Connect with transfer advisors and ambassadors



Receive special invitations to Wayne State events

# TRANSFER STUDENT SUCCESS CENTER

As you consider your transfer to Wayne State, let the Transfer Student Success Center (TSSC) help you every step of the way. We can help you maximize your transfer credit, discover academic and personal support, and build transfer confidence.



## Resources

- Transfer advising
- Transfer Chat
- Credit evaluation
- Plans and pathways



## Activities

- Weekly drop-in advising
- New Transfer Orientation
- National Transfer Student Week
- Welcome week events



## Connections

- Transfer Student Club
- Transfer Living Learning Community
- Transfer Ambassadors
- Transfer Student Lounge

To learn more or schedule an advising appointment, visit [wayne.edu/transfer](https://wayne.edu/transfer)



**The TSSC can support you from start to graduation.**

# UNDERSTAND TRANSFER CREDIT

[wayne.edu/transfercredit](http://wayne.edu/transfercredit)

## What will transfer?

All college-level classes from regionally accredited colleges with a grade of 2.0 (C) or above will transfer. There are no specific limits to the number of transfer credits. However, each academic program has specific requirements that must be satisfied, which helps determine the best number of credits to transfer.

## How will it transfer?

Courses transfer as the number of credits earned at the college where you took the class. This is true regardless of the number of credits the Wayne State equivalent course is worth. Each transferred course will match one of the following types of credit:

### Equivalent credit

Course(s) that are determined to satisfy a specific requirement and/or prerequisite.

### Department credit

Course(s) that don't closely match a specific WSU course, but transfers into the academic department. Usually major elective credit.

### Elective credit

Course(s) that don't match a specific WSU course or "fit" into an academic department. Usually transferred as general elective credit (GEN 1XXX or GEN 2XXX). Elective credit can be used to complete graduation requirements.



## Michigan Transfer Agreement (MTA)

Is a block of 30 credit hours that fulfill the Wayne State general education requirements. The MTA endorsement doesn't require exact course-to-course equivalencies. The MTA can be earned with or without an associate degree.

## Reverse Transfer

Is an opportunity to transfer Wayne State credit back to your Michigan community college to earn your associate degree. See the Transfer Student Success Center for more details.



# TRANSFER CREDIT RESOURCES

## Course equivalency tool

Need to check specific courses for transfer credit? Use our course equivalency tool to research how your courses transfer.

## Transfer plans

Transfer plans lay out the specific courses community college students can take that satisfy direct equivalencies toward their intended major.

## Transfer Equivalency Self-Service (TESS)

Transfer Equivalency Self-Service (TESS) is a tool that displays how your earned credits will transfer into specific Wayne State degree programs. The tool provides an unofficial degree audit that indicates how your transfer credits are applied and which courses are still required to complete the degree.

## AP, CLEP, and IB

Don't lose credit from Advanced Placement (AP), College Level Examination Program (CLEP), and International Baccalaureate (IB) tests. There is no limit to the number of transferable credit hours that may be granted for any combination of these tests.

## Send official transcripts

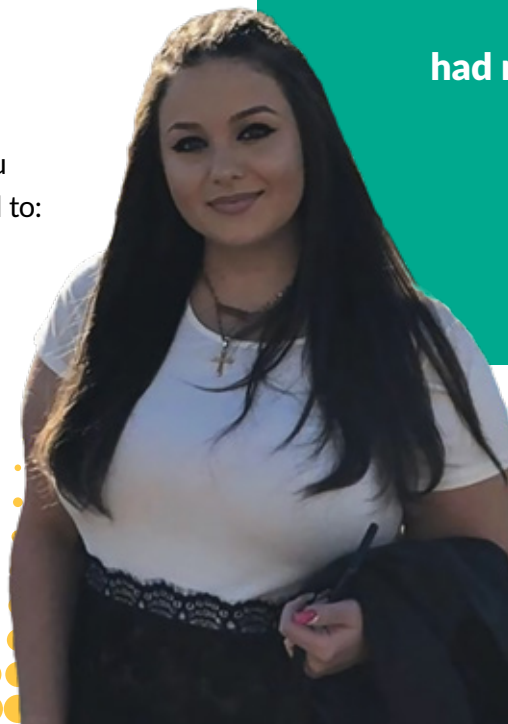
Request your current college(s) to send your official transcript electronically to **admissions@wayne.edu**. Transcripts sent electronically is the preferred method. However, if needed you may send your transcripts via mail to:

**Wayne State University**  
**P.O. Box 02759**  
**Detroit, MI 48202**



**“Wayne State University has a diverse campus with many friendly faces that are always willing to help. I have spoken to and have worked with professionals who all had nothing but good things to say about WSU!”**

**Martina Jaberoo**  
*Psychology major*  
*Transfer student from*  
*Macomb Community College*



We believe there's no better investment than the one you make for your future. That's why even though Wayne State tuition is the lowest among Michigan's research universities, we support students with nearly \$359 million annually in federal, state, institutional, and private aid through scholarships, grants, loans and work-study programs. The first step to financial assistance is visiting [studentaid.gov/fafsa](http://studentaid.gov/fafsa) to complete the Free Application for Federal Student Aid (FAFSA).

### Transfer merit scholarships

Wayne State offers merit scholarships to qualified incoming transfer students who have not yet completed a bachelor's degree. For full consideration, complete your admission application by the appropriate deadline.



Scan for eligibility, retaining award, and more information

#### Warrior Transfer Award

up to \$6,000  
per year

#### Gold Transfer Award

up to \$4,000  
per year

#### Green Transfer Award

up to \$2,000  
per year

#### Pathway Award

up to \$1,000  
per year

### Flat-rate tuition

Instead of paying per credit hour, full-time undergraduate students pay one flat rate, whether they take 12 to 18 credits. This model has been shown to help students graduate faster and with less debt.

### Reconnect

Wayne State University offers support to students who participate in the Michigan Reconnect program through the State of Michigan. Students interested in pursuing a bachelor's after obtaining their associate degree through Michigan Reconnect will be considered for a Reconnect Transfer Award.

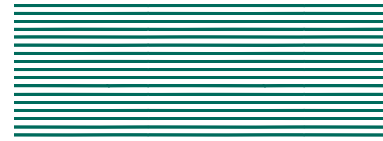
### Honoring your service

A 50% tuition discount is available for active military students. Learn more about this and other programs for service members at [omvae.wayne.edu](http://omvae.wayne.edu).

### Jump-start graduate school

Accelerated Graduate Enrollment (AGRADE) program allows students to simultaneously enroll in an undergraduate and graduate program. Students can apply a maximum of 16 credits towards an undergraduate and a graduate degree in the student's major or closely aligned field.

# TRANSFER EXPERIENCE



[wayne.edu/transfer/student-experience](http://wayne.edu/transfer/student-experience)

**At Wayne State University, you're not just a student. You're a Warrior, ready to blaze your trail and thrive in and out of the classroom – in our labs, studios, stages and beyond.**

During your time with us, take advantage of all Wayne State has to offer, from groundbreaking research opportunities and industry mentorships to internship experiences located just steps from campus. With our location in the heart of the region's center for business and innovation, you can navigate seamlessly from the classroom to the office while taking advantage of opportunities to cultivate the skills you learn.

## Transfer Living, Learning Community

The Transfer Student Living Learning Community (LLC) provides a supportive environment for transfer students who live on campus and want to expand their social connections with their peers while building their network. Additional benefits include:

- ▶ supplemental transfer advising
- ▶ support navigating Wayne State and exploring Detroit
- ▶ special academic and social connections
- ▶ team building experiences

## Transfer Club

The Transfer Student Club (TSC) is a campus-based student organization created and run by transfer students. It's a great opportunity to meet other students, network, and enjoy special experiences around the city and campus.



**“One of the biggest factors that attracted me to Wayne State was its reputation of being a university that “created great teachers.” Most of the teachers that have made an impact on my life (including my mother) graduated from Wayne State.”**

**Rayna Tinnon**

*Early and Elementary Education major  
Transfer student from Wayne County  
Community College District*



# CONNECT WITH US

There are a number of ways to connect with us in-person or virtually.

## RESOURCES

Offices, websites, and contact information for commonly used departments across campus.

### Transfer Student Success Center

wayne.edu/transfer  
transfer@wayne.edu  
313-577-2487

### Office of Financial Aid

wayne.edu/financial-aid  
studentservice@wayne.edu  
313-577-2100

### Adult Learners

wayne.edu/advising/adult-learners  
adultlearners@wayne.edu  
313-577-2680

### Undergraduate Admissions

wayne.edu/admissions  
admissions@wayne.edu  
313-577-2100

### Housing and Residential Life

housing.wayne.edu  
housing@wayne.edu  
313-577-2116

### Career Services

careerservices.wayne.edu  
careerservices@wayne.edu  
313-577-3390



If convenient, you can visit us outside Detroit at the following locations to learn more about transferring to Wayne State.

### Advanced Technology Education Center (ATEC)

Across from Macomb Community College  
(south campus)

14601 East Twelve Mile Road  
Warren, MI 48088  
586-447-3905

### Wayne State Schoolcraft Center

Schoolcraft College  
Jeffress Building (third floor)

39201 W. Seven Mile Road, Suite 320  
Livonia, MI 48152  
734-853-3450



WAYNE STATE  
UNIVERSITY